

## **Appendix A-1**

### **Photographs of Upper American River Project Key Facilities**



**Rubicon Dam and Reservoir**



**Buck Island Reservoir**



**Loon Lake Reservoir and Dam**



**Gerle Creek Reservoir**



**Gerle Creek Canal, en route to Robbs Forebay**



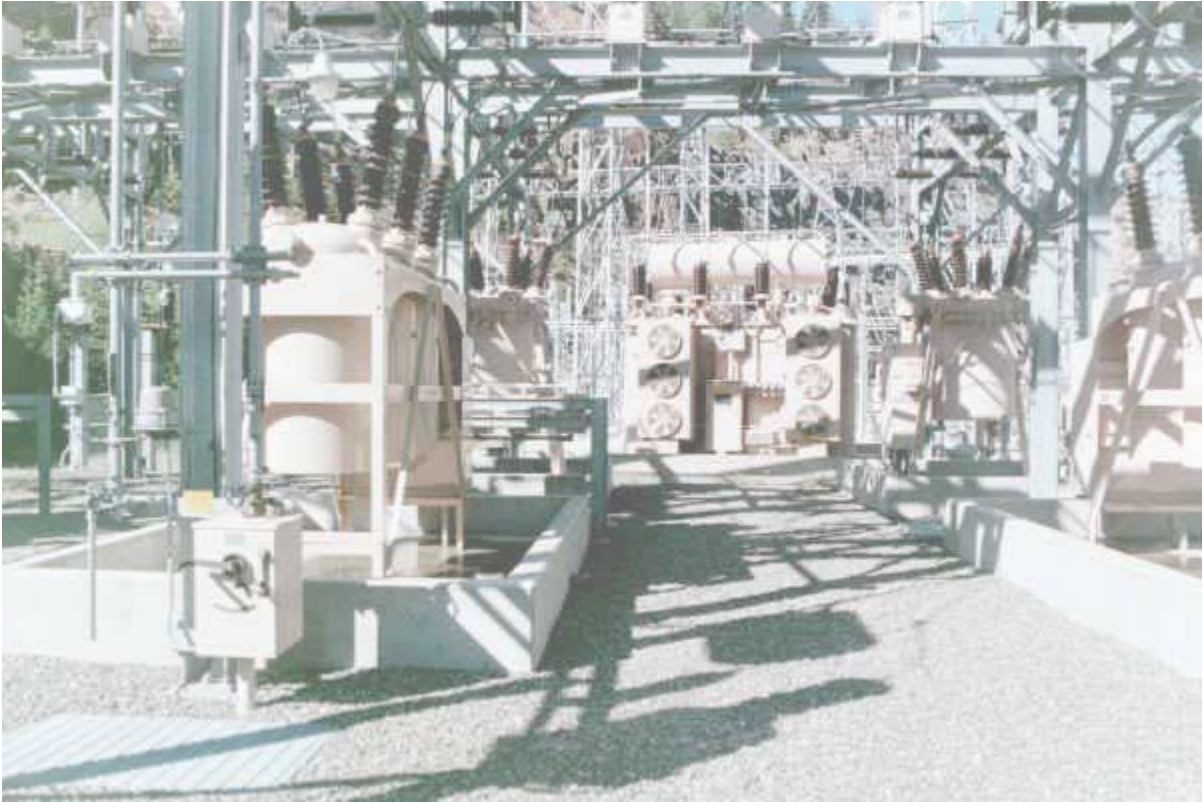
**Robbs Peak Forebay**



**Robbs Penstock to Union Valley Reservoir**



**Union Valley Reservoir**



**Union Valley Switchyard**



**Union Valley Dam and Powerhouse**



**Camino Dam and Flow Release into Silver Creek**



**Brush Creek Reservoir and Dam**



**Camino Penstock, Powerhouse and Switchyard**



**Slab Creek Reservoir and Dam**



**White Rock Powerhouse and Overhead Crane**